



TAMPA HEIGHTS NEIGHBORHOOD NEWS

Volume 2 Issue 1
August 2003

Calendar of Events....

8/12	THCA Board Meeting
8/22	Porch Party @ The Sanctuary
8/19	Greenprint Initiative Meeting @ Sacred Heart ***
8/28	Civic Association General Meeting
9/9	THCA Board Meeting
9/12	Porch Party @ Caroline Naranjo and Karen Reynolds – 2714 N. Morgan St. (300-1524]
9/25	Civic Association General Meeting
10/10	Porch Party @ Roy and Mary Hernandez – 213 W. Palm Ave. [222-3452}
10/14	THCA Board Meeting
10/23	Civic Association General Meeting
10/24	Porch Party @ Robyn and Rasier Gomez – 308 E. Ross Ave. [221-0854]
11/7	Porch Party @ Chris and Tiffani Eriksen – 406 E. Ross Ave. [997-7777]
11/11	THCA Board Meeting
11/20	Civic Association General Meeting
12/9	THCA Board Meeting
12/18	Civic Association General Meeting

** All Civic Association meetings are held at 7 p.m. at the Palm Avenue Baptist Towers on the corner of Palm and Florida Avenues.

*** Future Greenprint Initiative meetings will be determined at the Aug. 19 meeting. Due to the latest involvement of the University of South Florida and our mentors, Southeast Seminole Heights, there are schedule conflicts that will be addressed in the August meeting.

N.E.A.T pickup for Tampa Heights is scheduled for **OCTOBER 18.**

N.E.A.T. guidelines:

- All items must be curbside by 7:30 am the morning of cleanup. Please do not put items curbside more than 1 week before your scheduled clean-up. Assistance with the loading of your materials is appreciated but not required.
- Materials accepted for collection during N.E.A.T. Cleanup: Furniture, televisions, mattresses, tires without rims, carpet, yard waste, dried latex paint and barbecue grills. Large appliances must be out on Saturday and will be picked up during the following week.
- Materials not accepted: Auto parts, building materials such as sheds, fences, tile, pip, wood/plywood, bricks, concrete blocks, roofing materials, doors, windows or drywall, hazardous, toxic or combustible materials like lead, mercury, asbestos, PCBs, chlorine, radioactive materials, herbicides, pesticides, explosives, ammunition or pressurized gas cylinders, liquid wastes including paints, solvents or fuels, tires with rims, sludge, motor oil, metal drums, household garbage and tree trunks over 5 ft. long or over 100 pounds.
- Volunteers are needed to assist in our neighborhood cleanup. To volunteer or for more information, please call 813-931-2153.



Newsletter Coordinator: Jennifer Frankowiak (jenni@pci-web.com) or 221-3515

Contributors:

FOR ADVERTISING INFORMATION, PLEASE CONTACT JENNIFER AT 813-221-3515 OR JENNI.FRANKOWIAK@VERIZON.NET

Porch Parties 2003

Porch Parties are twice a month on Friday's at 7pm. Host is responsible for: soft drinks, ice, paper goods, and one covered dish. Guests are to bring one covered dish and BYOB. Come on out, meet your neighbors, and enjoy!

www.tampaheights.org

Did you know....

Each issue we will highlight a feature from the Architectural Review Committee guidebook for historic districts. This information will be helpful when making changes to the exterior of your home.



Urns and planters

Many of the original urns and planters are still intact on porches and balconies and in the streetside yards throughout the district. These planters are desirable because they enhance the architecture and provide historic character to the buildings.

It is important to retain original planters and urns wherever possible.

The introduction of rough-sawn planters or stained or unfinished wood planters is not appropriate for use on sites where contributing structures are present.

A Certificate of Appropriateness is not required for these modifications; however the ARC suggests the following:

- maintain and repair existing urns and planters
- Use contemporary urns and planters which capture the character of Tampa Heights without being overly decorative
- Avoid urns and planters that are not characteristic of the area.

For more information call the ARC: 274-8236.

Tampa Heights Community Information Directory

City Council	274-8131
City Information	274-8211
Code Enforcement	274-5545
Ditch Cleaning	622-1901
Dumping (illegal)	348-1111
Fire Rescue Info.	274-7015
Tampa Housing Auth.	253-0551
Junk Cars	274-5545
Noise Complaints	274-5545
Overgrown Lots	274-5545
Paint Your Heart	
Out Tampa	258-4512
Mayor Pam Iorio	274-8251
Police Information	276-3200

Officer Skypack	339-5400 p 310-0552 c 354-6620 vm
Officer Farrell	610-5205

Police non-emergency	231-6130
QUAD office	276-3606

** Please call the appropriate city department with any problems or concerns.

RECIPE CORNER

Punch Bowl Cake

White cakemix (bake as directed 13x9 pan)
1 can condensed milk
3 cans pineapple chunks
2 cans pie filling (blueberry or cherry or mix)
3 big tubs cool-whip

Cut cake in ¼ inch squares
Line bottom of bowl (preferably clear bowl)
Drizzle milk
Layer pineapple
Layer pie filling
Layer whip cream

Continue layers, alternating pie filling, finish with Whip cream. Glass bowl gives a nice red/white; blue/white or red, white and blue effect.

Banner Design Contest

WANTED: new logo design that evokes community pride and participation for new neighborhood banners to be available to all Tampa Heights residents. Winner will receive \$100 cash prize from the Tampa Heights Civic Association and recognition as the artist of the new community banner. Submittals should fit on standard 28" x 40" banner size and be delivered to 2101 N. Jefferson Street by September 15th. Questions, please call Ralph @ 766-5987.

Tampa Heights Redevelopment Projects



Stetson Law School

Phase I: Law school, 2nd District Court of Appeals and office space in approximately 80,000 square feet/3 story building
Phase II: Hillsborough County Bar Association to Erect Building onsite.

The Sanctuary

32 Loft apartments, 4,500 square feet for special events/office space. Renovation of Temple Church & School

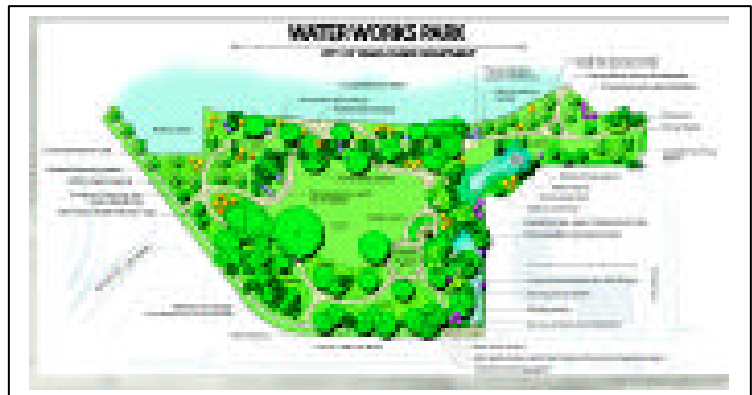


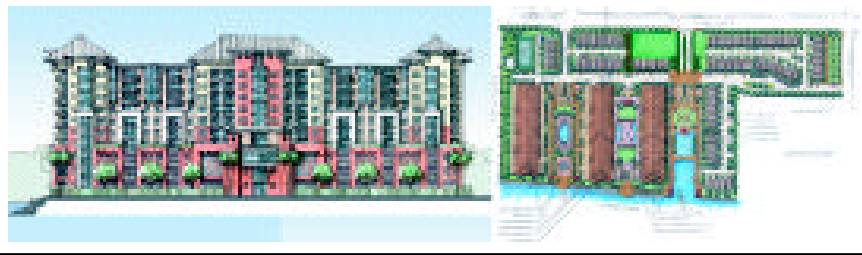
GTE Federal Credit Union

350,000 Square feet master-planned headquarters
150,000 square feet in phase I. Starting June 2003

Waterworks Park

New 15 acre park along the Hillsborough River.
Existing natural spring will be enhanced and park will link to the Riverwalk.





Bank of America Riverfront Development

300+ Condominiums and 100 townhomes, riverwalk, pool, tennis and improved infrastructure. Project start is Winter 2003 – 4 year buildout.

Children’s Board of Hillsborough County

25,000 square feet of new office space. Start July 2003




Law Offices of Williams, Shifino, Mangione & Steady, P.A.

30,000 square feet of law offices and 2,000 square feet of retail. Park in front of the building will be renovated and upgraded. Project targeted for completion by Summer 2004.

ADVERTISERS:

Eddie SERRALLES LICENSED REAL ESTATE BROKER

The Serralles Group


 REAL ESTATE, MORTGAGE, CONSTRUCTION

813-307-0007
 fax 813-307-0998
 cell 813-610-1565

2524 Highland Avenue
Tampa, FL 33602 SERRALES@TAMPABAY.RR.COM

Ybor City Party House

- Upscale House Party
- Theme Parties
- Corporate Events
- Cocktail Parties
- Bachelor Parties
- Engagement Parties
- Birthday Parties
- Holiday Events

Comfort & Style

400 Sq Ft

Call For Availability:
(813) 307-0007